

The
Campaign
for OSU

THIS
AMAZING
PLACE



THIS
HISTORIC
MOMENT

*“We are Oregon State.
When we say we are
going to do something,
we do it.*

*And we exceed
expectations.”*

— PRESIDENT EDWARD J. RAY



IN 2004, OREGON STATE UNIVERSITY LAUNCHED ITS FIRST-EVER COMPREHENSIVE FUNDRAISING CAMPAIGN, **THIS AMAZING PLACE, THIS HISTORIC MOMENT: THE CAMPAIGN FOR OSU. THE ORIGINAL GOAL WAS \$625 MILLION. THE REST, AS THEY SAY, IS HISTORY.**

1 IN EVERY **5**
ALUMNI
MADE A
CAMPAIGN
GIFT

BEFORE THE CAMPAIGN
(1868-2004):

54 GIFTS
OF
\$1 MILLION
OR MORE

DURING THE CAMPAIGN
(2004-2014):

201
GIFTS OF
\$1 MILLION
OR MORE

GIFTS TOTALING

\$1.14

billion

“A tremendous thanks to the many alumni, parents, friends, and partners whose generosity and vision helped us tap into a deep well of loyalty and support for OSU and an appreciation for all we do for the citizens of our state and beyond. It is your generosity that has made so much possible for our students, faculty, staff, and community.”

– J. MICHAEL GOODWIN, PRESIDENT & CEO,
OSU FOUNDATION

MORE THAN

1,100

FAMILIES AND ORGANIZATIONS GAVE AT LEAST

\$100,000

MORE THAN 106,000 DONORS
FROM EVERY STATE AND 58 NATIONS

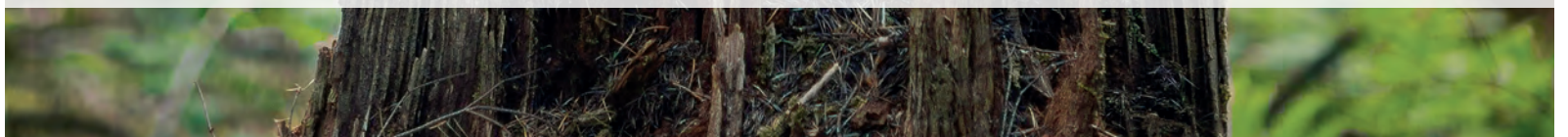
40% were first-time donors to OSU

THE
NUMBERS
ARE
HISTORIC,
BUT THE
STORIES
THEY
REPRESENT
ARE TRULY
AMAZING.

You—our alumni, partners, and friends—helped Oregon State University make history. Over the past decade, your extraordinary level of support has transformed our campus, our academic and research programs, and the student experience. Even more telling than the historic numbers are the stories of students, faculty, and staff who have been touched by your generosity and are reaping the benefits of this ever-more-amazing place. The Campaign for OSU has fueled the promise and potential of literally thousands from the OSU community, who in turn are making their mark on Oregon, the nation, and the world. Thanks to your commitment, their journeys are bright with possibility, as is the future of our university.



AUNA GODINEZ '17 OF SPRINGFIELD HIKED CALIFORNIA'S JOHN MUIR TRAIL WITH A HIGH SCHOOL MENTOR AND FELL IN LOVE WITH FORESTS. NOW, SHE SAYS, TO BE STUDYING FORESTRY IN OSU'S TOP-RANKED PROGRAM REALLY IS A DREAM COME TRUE—ONE THAT WOULD NOT BE POSSIBLE WITHOUT SCHOLARSHIP SUPPORT.



YOU MADE THE OSU EXPERIENCE POSSIBLE FOR THOUSANDS OF PROMISING STUDENTS...

Although Auna Godinez grew up less than an hour from OSU's campus, college seemed out of reach due to her family's financial situation and lack of experience with higher education. Her newfound love of forests as a high school student inspired her to apply to OSU. "I went from thinking I would not apply to college to knowing that OSU was where I was meant to be. Now I have more interests than I have time for!" This talented young woman who once could not imagine a path beyond high school is a renewable materials major in the College of Forestry, with minors in business and entrepreneurship, recreation, and resource management. Auna says this would not have been possible without scholarships, nor without the mentoring programs that have boosted her success and funded her participation in forestry research. Last summer, Auna traveled to Peru with her forestry professor to study wood anatomy and physiology in the Amazon—an experience also made possible by donor support. [The Campaign for OSU created 600 new scholarship and fellowship funds, an increase of 45 percent, and these resources are transforming the lives of thousands of students just like Auna.](#)

...AND HELPED THEM
ACHIEVE MORE THAN
THEY EVER
IMAGINED
POSSIBLE.



FINANCE MAJOR BLAKE HENDRICKS '16 IS GRATEFUL NOT ONLY FOR HIS SCHOLARSHIPS, BUT ALSO FOR THE OSU DONOR-FUNDED OPPORTUNITIES THAT ARE GIVING HIM REAL-WORLD FINANCIAL EXPERIENCE—SUCH AS MANAGING PART OF THE OSU FOUNDATION'S PORTFOLIO THROUGH THE OREGON STATE INVESTMENT GROUP AND TRAVELING TO WALL STREET TO LEARN FROM OSU ALUMNI.

FROM CORVALLIS TO THE WORLD

Despite already living in Corvallis, Breanna Balleby '15 never thought twice about choosing OSU, especially after receiving a scholarship to attend the University Honors College. Once here, she found her way to OSU's International Degree and study abroad programs. Breanna spent ten weeks living and studying in France, and she took part in a three-week immersion course in London with two OSU faculty members. "I had always assumed that scholarships were only for tuition, so I was appreciative of the support I received from OSU to take advantage of these global experiences," she says. Breanna has returned to France as a teacher through the French Embassy, which places native English speakers in French schools.



SEVEN YEARS, THREE DEGREES

"I feel as if I have grown right along with OSU," says Andres Cardenas '15 of Costa Rica, who came here as an undergraduate and stayed for a master's and Ph.D. in the College of Public Health and Human Sciences. Generous fellowship support influenced his decision, as did the momentum and growth in his college as it prepared to become Oregon's only accredited college of public health: "It was such an advantage not to have to borrow for graduate school, and also exciting to help build something new." Andres studies the long-term health effects of prenatal exposure to substances such as mercury and arsenic, research that has taken him from his office in the Hallie Ford Center for Healthy Children and Families all the way to New Hampshire and Bangladesh.

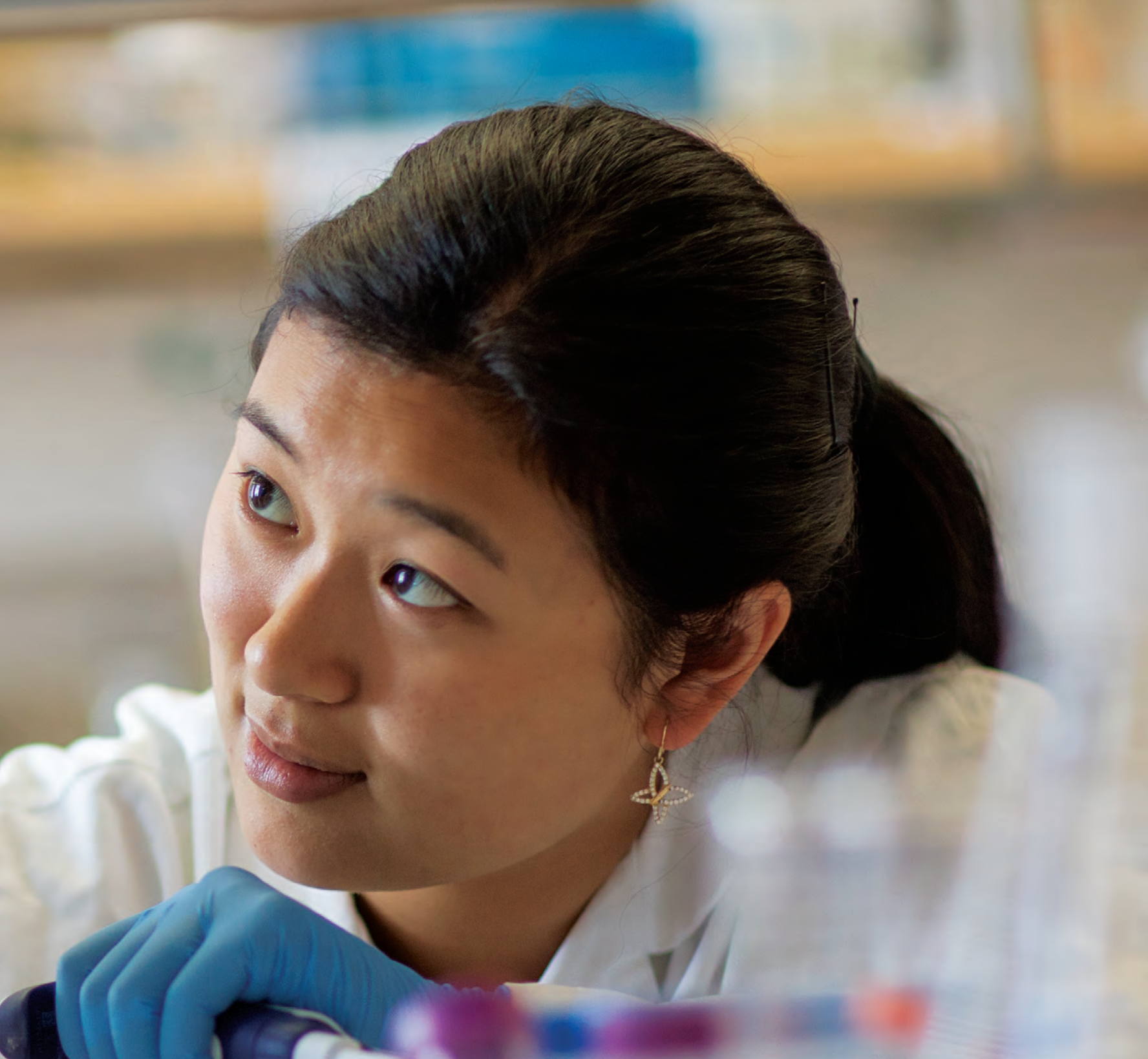
A BROADER PERSPECTIVE ON FARMING

A self-described "fifth-generation Oregon farmer and a third-generation OSU student," Tiffany Harper '15 came to OSU to broaden her understanding of agriculture beyond the family farm. "I took every opportunity I could get and ran with it. Anything I ever wanted to do, OSU made possible for me," she says. A crop and soil sciences major with a horticulture minor, Tiffany researched native bee pollination as part of a Howard Hughes Medical Institute-funded summer program, worked at OSU's Oak Creek Center for Urban Horticulture and Organic Growers Club, and interned as a viticulture technician with E. & J. Gallo Winery in California. She is pursuing a master's degree in community leadership development at the University of Kentucky.



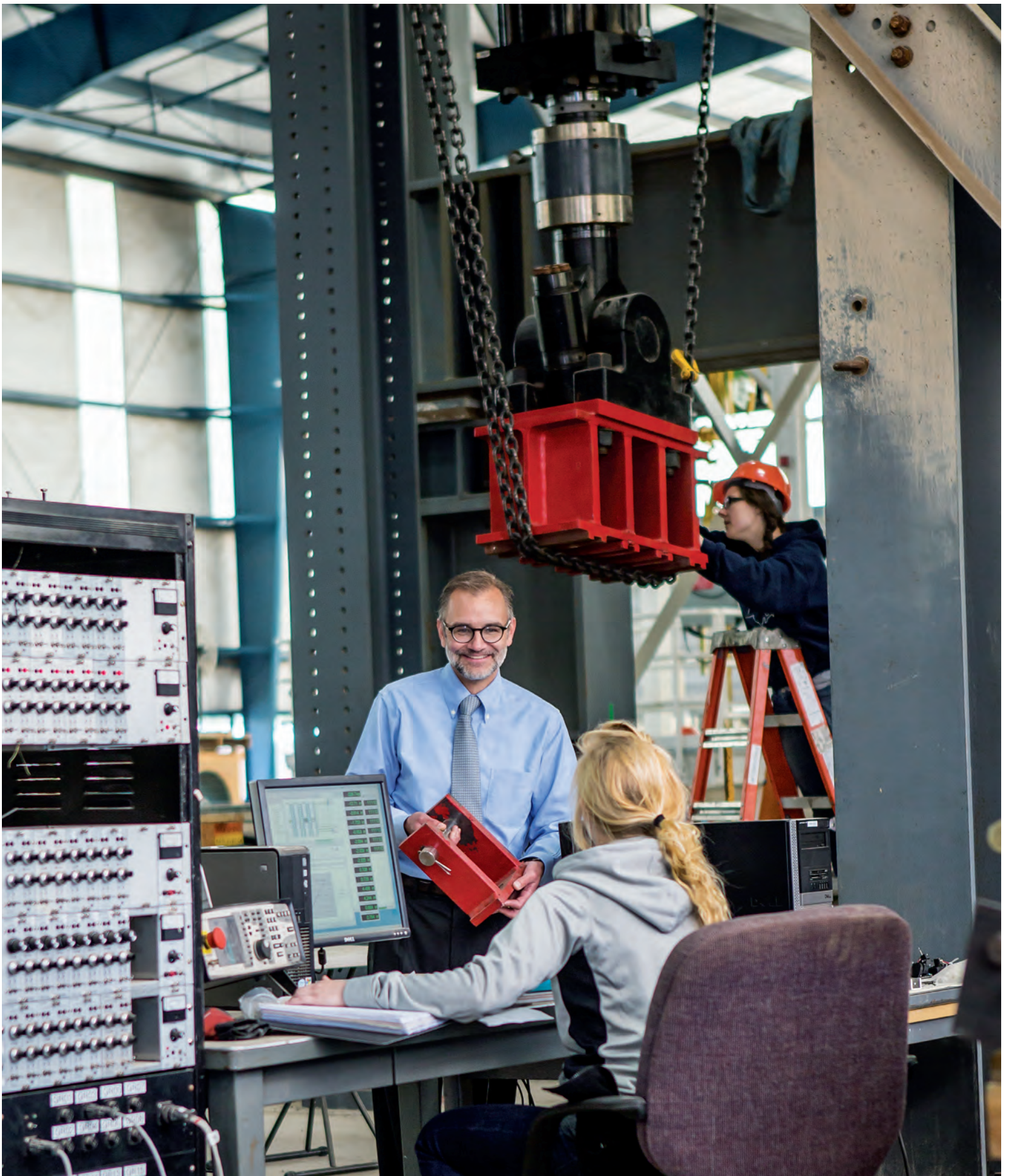


YOU MADE SURE THAT OSU STUDENTS
SEE NO LIMITS—ONLY
UNLIMITED OPPORTUNITIES.

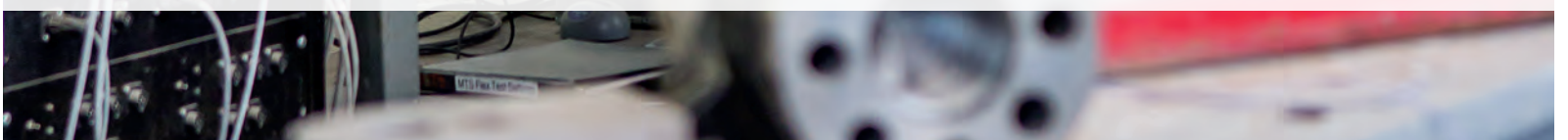


A LOVE OF SCIENCE AND MUSIC

STUDENTS LIKE BIOLOGY MAJOR STEPHANIE ZHAO '16 ARE ABLE TO PURSUE A RANGE OF INTERESTS AND PASSIONS AT OSU. STEPHANIE IS AN ASPIRING SCIENTIST WHO CONDUCTS RESEARCH ON HEALTHY AGING IN THE CAMPAIGN-FUNDED LINUS PAULING SCIENCE CENTER, WHERE SHE ASSISTS WITH A PROJECT THAT STUDIES MOUSE CELLS TO SHED LIGHT ON THE CHEMISTRY OF STRESS AND AGING IN HUMANS. SHE ALSO PLAYS VIOLIN WITH THE CORVALLIS-OSU SYMPHONY ORCHESTRA, COORDINATES VOLUNTEER ACTIVITIES FOR A FAITH-BASED CAMPUS GROUP, AND ENJOYS ROCK CLIMBING. LAST YEAR, STEPHANIE WAS ONE OF NEARLY 200 STUDENTS IN THE COLLEGE OF SCIENCE WHO RECEIVED A RECORD \$475,000 IN SCHOLARSHIPS.



CHRIS HIGGINS, THE INAUGURAL CECIL AND SALLY DRINKWARD PROFESSOR IN STRUCTURAL ENGINEERING, DIRECTS OSU'S STRUCTURAL RESEARCH ENGINEERING LABORATORY. THERE, HE AND HIS STUDENTS USE FULL-SCALE MODELS OF BRIDGES TO UNDERSTAND THE IMPACT OF NORMAL WEAR AND TEAR, WEATHER, EROSION, AND NATURAL EVENTS SUCH AS HURRICANES AND EARTHQUAKES—ALL WITH THE GOAL OF KEEPING THE REST OF US SAFE.



YOU GAVE
OSU'S AMAZING
FACULTY THE
RESOURCES
THEY NEED TO
EXCEL IN
THEIR
TEACHING,
RESEARCH,
AND SERVICE...

THE CAMPAIGN FOR OSU MORE THAN DOUBLED THE NUMBER OF ENDOWED FACULTY POSITIONS TO 126, GREATLY STRENGTHENING OUR ABILITY TO ATTRACT AND RETAIN TOP TALENT. These are professors like Chris Higgins, who arrived at Oregon State in 2000 and quickly began earning recognition for his teaching and research—including a project on reinforced concrete bridges for the Oregon Department of Transportation that saved the state roughly \$500 million. Today he is associate director of the Oregon Transportation Research and Education Consortium and is working to prepare the next generation of structural engineers our state and nation need to address an aging infrastructure. Dr. Higgins became the Drinkward Professor in 2013.

...AND TO SEIZE
OPPORTUNITIES TO
ADVANCE THEIR WORK
FOR THE BENEFIT
OF STUDENTS
AND SOCIETY.



MEGAN MCCLELLAND, THE KATHERINE E. SMITH PROFESSOR OF HEALTHY CHILDREN AND FAMILIES SINCE 2013, RESEARCHES HOW YOUNG CHILDREN DEVELOP SCHOOL READINESS SKILLS SUCH AS LISTENING, PAYING ATTENTION, AND FOLLOWING THROUGH ON TASKS. AMONG HER MANY ACCOMPLISHMENTS IS THE CREATION OF A STATEWIDE SCHOOL READINESS CONSORTIUM THAT WILL TRANSLATE EARLY CHILDHOOD RESEARCH FINDINGS INTO EDUCATIONAL POLICIES THAT WORK.

NAVIGATING THE INFORMATION AGE

"Today's information landscape is so volatile—we're producing huge amounts of new knowledge, and every day there are new tools and platforms emerging to manage and share information," observes The Valley Library's Anne-Marie Deitering, the Franklin A. McEdward Professor for Undergraduate Learning Initiatives. "We have to give students the skills and concepts they need to stay current and continue learning after they leave OSU." Professor Deitering works with OSU's faculty, the First-Year Experience Program, and Student Affairs to connect undergraduates with the library and help them build the information literacy skills required to navigate their 21st-century world. Nationally and internationally, she is a sought-after authority on the library experience for undergraduates.



IMPROVING NUTRITION TO FIGHT DISEASE (BELOW)

As a principal investigator with the Linus Pauling Institute and the endowed director for the Moore Family Center for Whole Grain Foods, Nutrition and Preventive Health, Emily Ho bridges lab research with a focus on public health and education. In the lab, she studies zinc and other antioxidant compounds found in foods such as broccoli and tea for potential cancer-fighting properties. At the same time, she is building the Moore Center into a hub for nutrition research and its application. "I have found I am most excited when my science makes its way to the public—to make a real difference in how people live their lives and in their health," she says. Donors Bob and Charlee Moore, cofounders of Bob's Red Mill Natural Foods, visit the Moore Center frequently and welcome OSU students to the company's plant in the Portland area for on-site learning.



GROWING TURF MORE SUSTAINABLY (ABOVE)

Turf specialist Alec Kowalewski was drawn to OSU in 2012 by the N.B. and Jacqueline Giustina Professorship in Turf Management. He and his students work with golf courses, schools, municipal parks, and turf grass farmers throughout Oregon to grow healthy turf using fewer chemicals and pesticides and less fuel and water.

ENGAGING BEYOND THE CLASSROOM (NEXT PAGE)

Along with endowed positions, OSU's 28 new and renovated facilities—including the stunning Austin Hall, home of the College of Business since 2014—have supported our faculty in doing their best work. Jared Moore, the Mary Ellen Phillips Professor of Accounting, praises Austin Hall for the many gathering spaces that encourage students and faculty to sit down, collaborate, and share ideas.







MASTERSON FAMILY MARKETPLACE

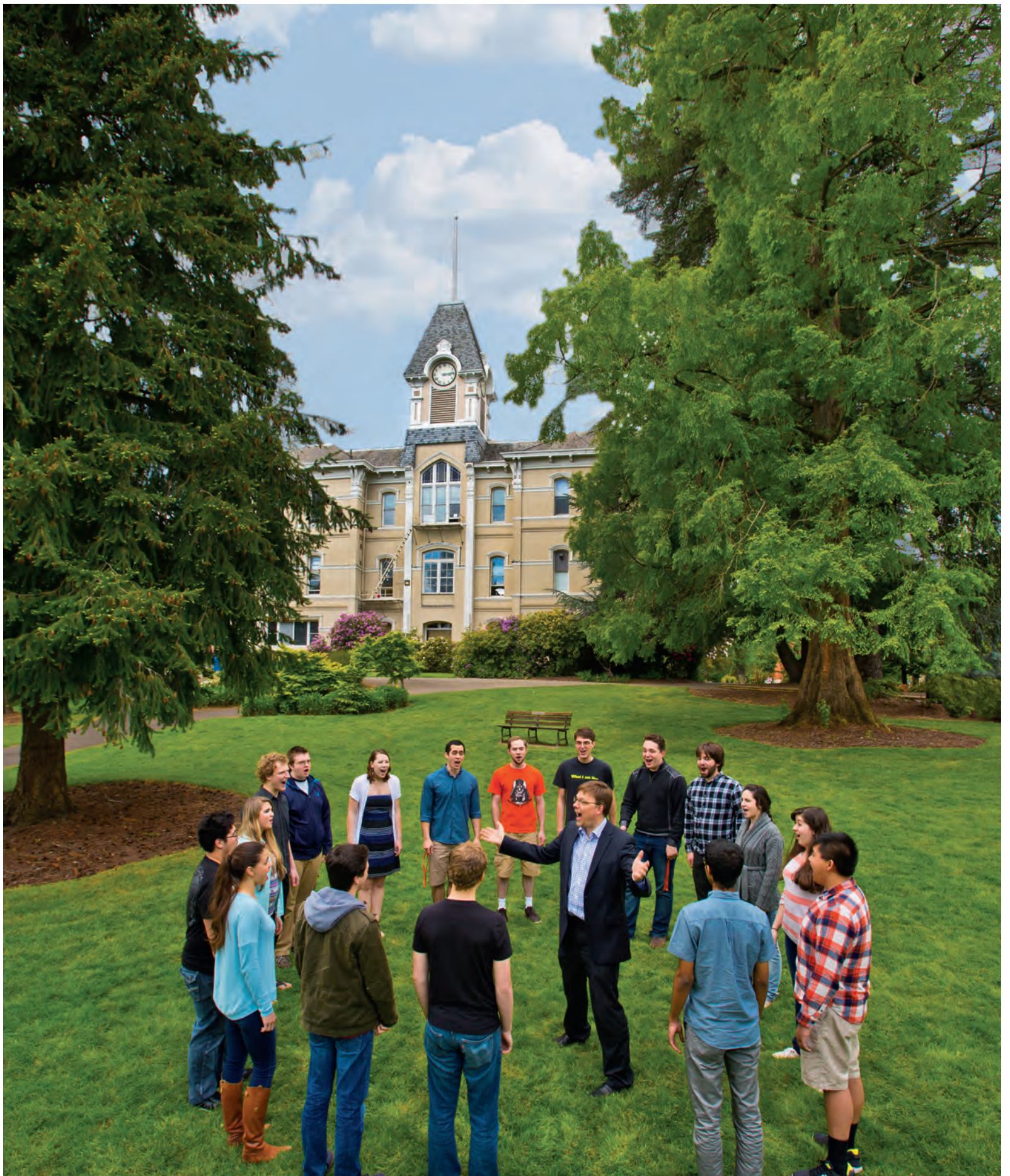


AS A RESULT OF YOUR COMMITMENT,
OUR STUDENT-ATHLETES
AND FANS HAVE FIRST-RATE
FACILITIES AND PROGRAMS...



TRACK MAKES A COMEBACK

COACH KELLY SULLIVAN TOOK A HUGE LEAP OF FAITH WHEN HE ACCEPTED THE CHALLENGE OF BRINGING TRACK AND FIELD BACK TO OSU IN 2004, GIVEN THAT THERE WAS NOT EVEN A FACILITY HERE ON CAMPUS. A LEAD GIFT IGNITED A GRASSROOTS FUNDRAISING EFFORT THAT BUILT THE WHYTE TRACK & FIELD CENTER, NOW HOME TO A WELL-ESTABLISHED WOMEN'S PROGRAM AND GROWING MEN'S PROGRAM. THIS IS JUST ONE OF MANY NEW AND IMPROVED SPORTS FACILITIES THAT HAVE RALLIED BEAVER NATION TO NEW HEIGHTS OVER THE PAST DECADE, FROM THE RESER STADIUM AND GOSS STADIUM EXPANSIONS TO THE GILL COLISEUM RENOVATIONS AND THE NEW OSU BASKETBALL CENTER.



STEVEN ZIELKE, DIRECTOR OF CHORAL STUDIES AND THE OSU CHAMBER CHOIR, WAS NAMED THE FIRST PATRICIA VALIAN RESER PROFESSOR OF MUSIC IN 2013. "I HAVE BEEN ABLE TO GIVE STUDENTS REMARKABLE AND POWERFUL OPPORTUNITIES THAT WOULDN'T HAVE BEEN POSSIBLE OTHERWISE," HE SAYS—INCLUDING LECTURES AND WORKSHOPS BY SOME OF THE WORLD'S FOREMOST EXPERTS IN CHORAL ARTS AND MUSIC EDUCATION.

...AND MUSIC, ARTS, AND CULTURE HAVE AN EVEN MORE VIBRANT PRESENCE THROUGHOUT OUR CAMPUS.

Oregon State believes that no research university can be truly great without first-rate programs in the arts. For Choral Studies Director and Professor Steven Zielke, his new Reser Professorship in Music is proof of that belief. So is the anonymous \$5 million commitment, including a \$1 million challenge component, to the School of Arts and Communication in the College of Liberal Arts—the largest investment in the arts in OSU’s history.

“The Campaign for OSU changed everything for the arts here, and the biggest advances are still to come,” he says. “People who never knew this side of OSU are taking notice.”

OSU is now an official university affiliate of the Los Angeles-based GRAMMY Museum, which provides access to the rich musical history and archives of the museum. The university has a new partnership with the Oregon Symphony, plans for new programs in arts entrepreneurship and popular music, and new investments in music technology. Outside of music, OSU is also known for excellence in creative writing, a reputation bolstered by the Stone Award for Lifetime Literary Achievement, one of the largest university awards of its kind. Awardees Joyce Carol Oates and Tobias Wolff have already visited campus to give readings, master classes, and lectures.

BECAUSE OF YOU, OSU IS
BRINGING FACULTY, STAFF,
AND STUDENTS TOGETHER
LIKE NEVER BEFORE
IN DYNAMIC
SPACES DESIGNED
FOR 21ST-CENTURY
LEARNING AND
COLLABORATION...



ENHANCING CULTURAL EXCHANGE

The new Native American Longhouse, Eena Haws—which means “Beaver House”—is a stunning example of a center that embodies the culture and spirit of the Native American tribes represented on this campus. It is a gathering space for them and an educational center for all students who want to learn more about Native cultures. Designed by the architect responsible for the Smithsonian’s National Museum of the American Indian, Eena Haws features huge Douglas fir beams and columns, large light-filled windows, and metal beam ornaments and door artwork that reflect the culture of Pacific Northwest tribes. The Longhouse also showcases the work of Native artists, including a one-of-a-kind, 360-degree totem created by a member of the Haida Nation and commissioned by OSU donors Luana '72 and Jim Whyte '70, MS '72. The Longhouse is just one of four new cultural centers at OSU, including the Centro Cultural César Chávez, the Asian & Pacific Cultural Center, and the Lonnie B. Harris Black Cultural Center.



PROMOTING STUDENT SUCCESS

The Beth Ray Center for Academic Success took root with ideas proposed early in The Campaign for OSU: What if students had a dedicated center where they could gather for independent and small-group study, access a computer lab and Writing Center, and receive supplemental instruction and tutoring for challenging courses? And what if that center could also offer specific services for student-athletes, who face extraordinary scheduling demands? For football player Cyril Noland Lewis '16, who arrived at OSU just as the Beth Ray Center opened, it is an invaluable resource: “My teammates and I are in there most days of the week for study hall and advising. The third floor really is our academic home.”

PRESERVING THE PAST, EDUCATING FOR THE FUTURE

OSU’s iconic College of Education building is now the beautifully renovated Joyce Collin Furman Hall, named in memory of Joyce Furman '65, who was a former math teacher, an advocate for Oregon’s at-risk youth, and a member of the OSU Campaign Steering Committee. This campaign project, like the transformation of Weatherford Hall and Kearney Hall (formerly Apperson Hall, pictured left), preserved the building’s sense of history while completely updating the interior for modern teaching and learning.





...AND EMPOWERING THEM TO
INNOVATE WITHOUT LIMITS IN THE
MOST ADVANCED
RESEARCH FACILITIES.



POWERFUL TOOLS, GROUNDBREAKING DISCOVERIES

THE LINUS PAULING SCIENCE CENTER IS INTENTIONALLY DESIGNED TO FOSTER COLLABORATION AMONG RESEARCHERS WHILE PROVIDING THEM WITH THE MOST ADVANCED EQUIPMENT AVAILABLE. DISCOVERIES MADE HERE PROMISE TO HELP US UNRAVEL THE CONNECTIONS BETWEEN VITAMINS AND DISEASE PREVENTION, DEVELOP NEW DIAGNOSTIC TOOLS AND MEDICATIONS, AND UNDERSTAND THE CELLULAR CHANGES INVOLVED IN AGING. THE CENTER'S ELECTRON MICROSCOPY FACILITY FEATURES SOME OF THE MOST POWERFUL HIGH-DEFINITION, HIGH-MAGNIFICATION MICROSCOPES ANYWHERE, INCLUDING A SOPHISTICATED SYSTEM FOUND AT ONLY TWO U.S. UNIVERSITIES. WITH ACCESS TO THESE TOOLS, RESEARCHERS FROM THROUGHOUT OSU AND BEYOND ARE ACCELERATING THEIR PACE OF DISCOVERY WHILE MAKING SURE THAT STUDENTS CAN EXPERIENCE HOW RESEARCH GETS DONE IN THE 21ST CENTURY.

OSU-CASCADES

For 30 years, OSU and Central Oregon residents have dreamed of establishing a four-year university in the state's fastest-growing region. That dream is now reality: OSU-Cascades has become a full-fledged degree-granting campus. Since its founding in 2001 as a cooperative program with Central Oregon Community College, OSU-Cascades has proven there is great demand for higher education in Bend and the surrounding areas. Today, nearly 1,200 students are enrolled, over 75 percent are from Central Oregon, and more than one-third are the first in their families to attend college. Construction is now underway on a ten-acre campus near the center of Bend with classroom buildings, residence halls, and administrative offices. In addition to making the new campus possible, campaign donors added a number of scholarships and created OSU-Cascades' first endowed position, the Tykeson Faculty Scholar in Energy Systems Engineering.



OSU EXTENSION

Being Oregon's land grant university means bringing research-based expertise directly to communities and businesses statewide through OSU's Extension Service. This includes preparing the next generation of Oregonians with the skills needed to navigate their futures and build an even stronger state and nation. Every year, OSU's 4-H program provides a range of opportunities for young people, from LEGO robot building to marine science to summer camps focused on forestry and wildlife. Maggie Livesay (left), the first Emily Rynerson Cosci Benton County Professor for Environmental Education, works with teachers and volunteers on programs that connect students with science and nature throughout the county.

MARINE STUDIES

OSU has long been a steward of the Oregon Coast and lower Columbia River, thanks to teaching, research, and outreach that advance our understanding of local marine and coastal wildlife and their habitats. We now have the opportunity to become a global leader in creating healthy, sustainable marine ecosystems that can also support industries such as fishing, forestry, and tourism. To realize this vision, OSU will build a new \$50 million facility at its Hatfield Marine Science Center in Newport and strengthen marine studies programs across the university and beyond, creating new partnerships with industry, government, and other educational institutions.



YOU HAVE EXPANDED AND DEEPENED OUR IMPACT FROM OREGON'S MOUNTAINS TO ITS COASTLINE AND BEYOND.

Your support for OSU has created an amazing ripple effect that travels far beyond our Corvallis campus. From Oregon's coast to the high desert, and from Klamath Falls to Multnomah Falls, OSU's programs and services touch the lives of people in all 36 counties. Our faculty and students use their research and their expertise to advance areas ranging from agriculture, botany, wine production, and seafood harvesting to public health, nutrition, and education. An OSU education is within reach for more residents from all corners of the state, thanks to increased scholarship funding, the new OSU-Cascades campus, and online options that bring OSU right into their homes and workplaces.





WITH YOUR SUPPORT, OSU
WILL CONTINUE TO PURSUE
A MAGNIFICENT
TOMORROW.

MENTORING YOUNG SCIENTISTS

Sandra Loesgen, the Terence Bradshaw Professor of Chemistry, focuses on finding new disease-fighting compounds in nature: plant fungi that could become the basis for novel antibiotics, for example, and soil bacterium with potential anti-cancer properties. She credits her own science teachers with her passion for chemistry: "They gave me that early push to think I can really do something important with chemistry and create real change." Dr. Loesgen is paying it forward by involving undergraduates in her lab research alongside her doctoral students. Working with undergraduates is more time-consuming, she says, but well worth the effort. "I choose to have them there because we need to bring talented students in and show them how real research gets done. Figuring out these compound structures is a really complex puzzle, but watching them succeed is the best feeling ever. They see their potential to start a whole new story that could one day benefit all of humankind."



FROM SCIENCE LABS, ART STUDIOS, AND WORKPLACES
TO LOCATIONS FAR AND WIDE, OSU STUDENTS
HAVE LEARNING EXPERIENCES
THAT OPEN UNEXPECTED
PATHWAYS AND OPPORTUNITIES.

BUILDING A GLOBAL PERSPECTIVE

If it weren't for scholarship support from OSU and other organizations, Ilwaad Aman '15 says she would not have attended OSU from her native country of Kenya, studied overseas for two months in China, or joined OSU's Semester at Sea Program in Europe. "These experiences transformed me," she says, "and I learned more from them than I've ever learned in any classroom." Here on campus, Ilwaad was a resident assistant in OSU's International Living Learning Community; a Cultural Student Ambassador with the INTO program, which helps international students make the transition to OSU; and a member of the Dean's Student Leadership Council in the College of Business. This fall, she moved to Hong Kong to pursue an internship in finance.



TOGETHER, WE WILL GIVE STUDENTS MORE OPPORTUNITIES TO CONNECT THEIR CLASSROOM LEARNING TO THE REAL WORLD.

For today's college students, classrooms and book knowledge are just the beginning. The world they will face is more complex, faster-paced, and more interconnected than ever before, so they need experiences that will help them develop the skills to navigate it: effective collaboration, creative thinking, resilience, risk-taking, and an appreciation for diverse points of view. "OSU must empower students to apply what they learn in the classroom to unfamiliar, open-ended, and sometimes messy situations," says Vice Provost for Student Affairs Susie Brubaker-Cole. "They must have those transformative experiences that challenge them to develop the habits of mind to be effective problem-solvers." Thanks to The Campaign for OSU, more students than ever before are participating in experiential learning: global experiences, undergraduate research, internships, and civic engagement. This work is just getting started, though. With your help, we will expand these amazing opportunities and make sure that every OSU student can take advantage of one or more of them. By moving students beyond the classroom, we will help them discover new talents and test their limits in ways that are life-changing.

AS OREGON'S LEADING
COMPREHENSIVE
RESEARCH UNIVERSITY,
WE WILL ACCELERATE
THE ADVANCES
THAT HELP
OUR STATE
AND NATION
FLOURISH.

With your help, Oregon State University will become an even more integral partner in the many industries that are propelling Oregon into the future, ranging from foods and beverages to wood products, new technologies, and engineering solutions. Our expertise will not only help these sectors thrive, but also create opportunities for students and faculty to work at the intersections between research and development and the marketplace. New products and innovations also make an impact far beyond Oregon's borders, as our nation and world look to us for high-quality goods and best practices. OSU can be a role model for creating university-industry partnerships that truly work.

ADVANCED WOOD PRODUCTS

Could skyscrapers one day be made of wood? Plans are already taking shape in Europe and Canada, and OSU's College of Forestry aims to lead the way for the United States. Faculty and students are working with Oregon's timber industry to create an exceptionally strong wood product called cross-laminated timber, made of lumber pieces glued together across the grain. This innovative material is already being used to construct wood buildings that are much taller than has been previously possible. To advance this work along with research on other wood-engineered projects, OSU is building a new \$60 million Oregon Forest Science Complex. This new approach promises to reduce the carbon footprint of high-rise construction while also strengthening the timber industry and forest development.



OREGON QUALITY FOODS AND BEVERAGES

OSU is positioned to lead the way in helping our state become known for "Oregon Quality" in food and beverage products, which represent a \$22 billion share of the state's economy. Our globally ranked College of Agricultural Sciences already has a strong presence throughout Oregon, thanks to 13 agricultural research stations, OSU Extension, and the Food Innovation Center in Portland. We have broad expertise in developing healthier crop varieties more efficiently and sustainably. We also have a top-ranked food science program that includes beer brewing, cheese making, and wine production, among other specialties. Together with partners throughout the state, we will create an even more prosperous food production economy in Oregon. OSU can help Oregon feed a growing planet while also feeding people's desire for high-quality, natural, sustainable foods.



ROBOTICS

Faculty and students in OSU's Dynamic Robotics Laboratory are applying the mechanics of two-legged walking by humans and birds to the design of a bipedal, human-scale robot called ATRIAS. Unlike other walking robots, ATRIAS moves with quickness and agility, even when confronted with rough terrain or other obstacles. OSU researchers are partnering with the University of Michigan and Carnegie Mellon University to perfect the technology, which has applications that could range from assistive devices for the disabled to dangerous rescues and information-gathering from disaster zones.



“With you by our side, we will continue to build an OSU that pushes students not to ask ‘What will my major be?’ but instead ‘How will I make a difference in the world?’ Our special culture of collaboration and big thinking will only grow stronger.”

— PAT RESER '60, CHAIR, OSU BOARD OF TRUSTEES;
CO-CHAIR, THE CAMPAIGN FOR OSU

THANK YOU FOR YOUR SUPPORT... WITH SPECIAL GRATITUDE TO THOSE WHO MADE CAMPAIGN LEADERSHIP GIFTS OF \$100,000 AND ABOVE.

Every gift to *This Amazing Place, This Historic Moment: The Campaign for OSU*, no matter the size, contributed to the campaign's phenomenal impact on students, on faculty, and on people across the state and around the world who rely on Oregon State's knowledge and research to enrich their lives every day. OSU's successes today and well into the future are the result of your belief in our mission, our vision, and most importantly, our people. Thank you for making history with us.

(The following lists acknowledge gifts received from July 1, 2004, to December 31, 2014.)

CAMPAIGN DONORS: INDIVIDUALS AND FAMILIES \$1 MILLION AND ABOVE

Anonymous (7)	Sherry & Ronald M. Coblantz '65	Leroy Tillman Forman '42
Lois B. Acheson '37	Sue Gallo Coleman '58 & James E. Coleman '58	Loree E. Fox '42 & H. Clayton Fox '41
Brenda A. & Leonard A. Aplet '76	Ruth & Joe Cramer	Joyce Collin Furman '64 & William A. Furman
Joan D. '05 (Hon.) & Ken Austin '53	Frances Cripps	Judy Mellenthin Gaulke '65 & Michael R. Gaulke '68
Celia Strickland Austin '76 & Ken Austin III '76	Dennis P. Crosby '73	Helen Hume Gienger '57 & Lenhart A. Gienger '57
Barbara S. & Robert L. Bailey '63	Carmen Phelps Cutting '65 & Michael L. Cutting '65	Erika R. & P. Leon Giles '64
Marian C. & Stephen M. Bailey '70	Earl T. Dale	Carolyn Keen Giustina '71 & Larry M. Giustina '71
Thomas B. Barocan '64	Leila M. & Pete deLaubenfels '62	Jacqueline L. Giustina '10 (Hon.) & Nat Giustina '41
Michelle Reser Bottaro '90 & David M. Bottaro '92	Stephanie L. & Jon S. DeVaun '85	Irene Giustina Goldbeck '74
Terence C. Bradshaw	John A. Drexler Jr.	Margaret D. Gravatt
Mary J. & Fred Brauti '49	Sally & Cecil Drinkward	Betty Neuner Gray '43 & John D. Gray '40
Betty Ann Callahan & Darry W. Callahan '64	Shirley Brazille Droschkey '46 & William R. Droschkey	Linda D. & Robert A. Gray '53
Sandy Marshall Campbell '85 & Scott D. Campbell '80	Shirley & Roy C. Edgerton '48	Ginger Hudson Harrison '64 & Ken L. Harrison '64
Campo Family	Margaret Watt Edwards '27	Eileen Potucek Hartmann '74 & Norbert A. Hartmann Jr.
Kim Martin Casale '83 & Carl M. Casale '83	Cheryl Ramberg-Ford & Allyn C. Ford	
Marcia Wiseman Coats '53 & Marvin W. Coats '51	Hallie E. Ford	

Mildred Winchester Harvey '46
& Glenn W. Harvey '50
William C. Hoffman '57
Florence Hollingsworth '31
Lori Mills Huang '85 & Jen-Hsun Huang '84
Rosalie M. & Peter E. Johnson '55
Connie Howard Kearney '65 & Lee Kearney '63
Judith Carlson Kelley '78
& Martin N. Kelley '50
Lora Laslett Kelley '49 & Martin N. Kelley '50
Nancy & Wesley G. Lematta
Margaret Lenhard
Lobbato Family Charitable Trust
Jean Harris Loosley '48 & John Loosley '49
Betty Anderson Lundeen '42
& Robert W. Lundeen '42
Evelyn D. Lundstrom
Cheryl Miller Lutz '72 & I. Arthur Lutz
Jeanne & Louis L. Mace '59
Phyllis Hackney Mace '43
& Robert U. Mace '42
Margie & Jon A. Masterson '61
Barbara A. & Duane C. McDougall '74
Edith I. McDougall '30
Franklin McEdward '57
Christina H. Merryman
William Miley
Roberta & David A. Mocabee '52
Charlee '12 (Hon.) & Bob Moore '12 (Hon.)
Laura Earnest Naumes '81
& Michael D. Naumes
Gerry Marshall & Bernard A. Newcomb '65

Natalie Giustina Newlove & Robin Newlove
Betty Mae O'Brien '65 & Richard L. O'Brien '65
Jeanne K. & Carroll E. Page '50
John H. Palmer
Jane S. & Arthur W. Partridge
Raymond Pederson '41
Jody Leonard Petersen '47
& Donald E. Petersen '47
Paul B. Peterson '29
Glen Pfefferkorn & Morris Wendorf
Sally Ross Plumley '61 & Neil Plumley '61
Susan Wilson Poorman '61
& Ken R. Poorman '61
Jeanne Hartman Popovich '41
& Milosh Popovich '39
Vivian H. Reed
Patricia Valian Reser '60 & Alvin L. Reser '60
Laurie Davidson Reser '87
& Mark A. Reser '88
Jane Nichols Reser '81 & Martin A. Reser '83
Michael L. Reser
Mindy J. Reser '94
Patricia A. Reynolds '73 & Michael B. Camillo
H. F. Richardson '66
Robert W. Riggert '56
Sheri & John E. Roberts '65
Sara & Bob Rothschild '65
Cathryn Guinn Rudd '76
& James H. Rudd '06 (Hon.)
Helen P. Rumbel
Patricia R. & Gary W. Runes '61
Mary M. Rynerson

Sandra L. Brooke & Henry M. Sayre
Barbara H. & John A. Schnautz '56
Lois A. & Harold Schudel '53
Janice J. & Henry W. Schuette '50
Brigitte U. & Harley J. Smith '59
Jule West Spesock '44 & Wayne R. Spesock
Patricia Lemon Starker '74
& Barte B. Starker '72
Marilyn McCornack Starker '72
& Bond Starker '69
Kate Nelson Stirek '83 & John A. Stirek '82
Vicki & Patrick F. Stone '74
Richard Strachan '78
Judith Wicks Street '64 & James R. Street
Anita S. Summers
Tom Toomey '82
Christine & David Vernier '76
Sue & Gerald E. Vickers
Y. Sherry Sheng & Spike Wadsworth '60
Kathi & Jack W. Wells '51
Luana Kapunia Whyte '72 & Jim Whyte '70
Christine Keylock Williams '66
& James M. Williams '66
Stephanie Sanford
& Kenneth J. Williamson '68
Joyce K. & Robert C. Wilson '50
James H. Withycombe '51
Joetta Miller & Jackson Wong '58
Judith Atwood Youde '62
& James G. Youde '62



CAMPAIGN DONORS: INDIVIDUALS AND FAMILIES \$100,000-\$999,999

Anonymous (2)
Ann Pederson Aalund '71
& Robert R. Aalund '71
Elizabeth C. & Donald E. Abbott '48
Judy A. & Ronald L. Adams '70
Doris P. Adamson '43
Carolyn & William R. Ahlem Jr. '66
Diane Stacey Alexander '67
& Richard E. Alexander '66
Teruko A. & G. C. Alexander '51
Brigid W. & Terry M. Allen '78
Edward J. Ammer Jr. '40
Glenda K. & David L. Andersen '80
Harriet R. Anderson
Margaret Tate Anderson '49
Marjorie Kibbe Andrews '39
Jean S. & Stephen R. Andrus '50
Jennifer Gray Arbanas '82
& David P. Arbanas '81
Sandra A. & Paul G. Arbutnot
Neil B. Armantrout '63
Janet McBurney Armstrong '57
Peggy Hall Ashford '72 & Harold Ashford '72
Penny Yano Atkins '79 & Gary Atkins
Dorothy Yoshitomi Au '54 & Hawkin Au '51
Andrejs J. Auskaps '74
Robert C. Austin '49
Helen G. Ayers
Shirley A. & Bert G. Babb Jr. '55
Kathleen A. & Frank H. Baker
Mary A. & Steven C. Baker '67
Gladys L. & Norman E. Barclay
Tanya L. Barrett
Donna Storm Barrow & Kenneth T. Barrow '77
Jerry Barry Jr.
Carolyn Jelden Bartruff '67 & Victor Bartruff '71
June Cyrus Bashkin '47
Susan Schwind Bates '57 & John E. Bates '56
Betty Silva Bauer '57 & Robert E. Bauer '58
Clifford L. Baxter '64
Janet Travis Beardsley '63
& John P. Beardsley '62
Madge F. & Ernest H. Bearss '36
Bobbie & Gilbert Beck
Dolly & James F. Beck '70
Cliff R. Beckmann
Diane & Ben A. Beddingfield '73
Patty White Bedient '75 & Ronald J. Bedient

David E. Benson
Katrina Lauersen Beranek '82
& Steven R. Beranek '82
Wayne E. Berg '61
Becky Berger
Geraldine Jacobsen Berger & Paul C. Berger '50
Alice & Ernest L. Bergman '55
Kelly Cole Berka '77 & Jack W. Berka '77
James W. Bernau
Ruth A. Beyer '77
Cynthia & Frank E. Biasca '41
Bryan Bickmore
Louis H. Blackerby '39
Susan & Gary Blackie
Rosemary & David W. Blair '52
Rosaluisa G. & James J. Blanc '75
Elaine Boone
Penny S. & Elliott H. Boone '65
Peggy A. & Jack R. Borsting '51
Angie S. & Charles W. Botsford '67
Donald L. Bower '48
Nancy A. & Blair T. Bower
Nancy J. Bradford
Karen E. Bradley
Janice K. & Michael D. Brady '69
Judi & Jack Brandis Jr. '65
Kris Otteman Brant '82 & Jeffrey M. Brant '82
Krista & Rex L. Breunsbach '66
Colleen R. & Craig A. Briggs '85
Kathy Jo Brisker '10 & Timothy B. Steele
Olive K. Britt '40
Cathy Evans Brodie '71 & Jerry E. Brodie '71
Gretchen Brooks
Bert E. Brown '63
Beverly Boydston Brown
Dena B. & Larry H. Brown '58
Joanne & Larry L. Brown '75
Ann M. & Allan Bruckner
Janet & Thomas L. Buckley '63
Patty & Knute C. Buehler '86
Donald R. Buhler '50
Jun-Lan Wang Buhler & Donald R. Buhler '50
Elaine McCall & Denis R. Burger, Sr.
Sharon Abbott Burgess '71
& Clifford J. Burgess
Robin Hill Burnham '82 & Dick Burnham '81
Stacie & James W. Burns Jr.
Jeanne Schneider Burns '65 & Roy L. Burns '66

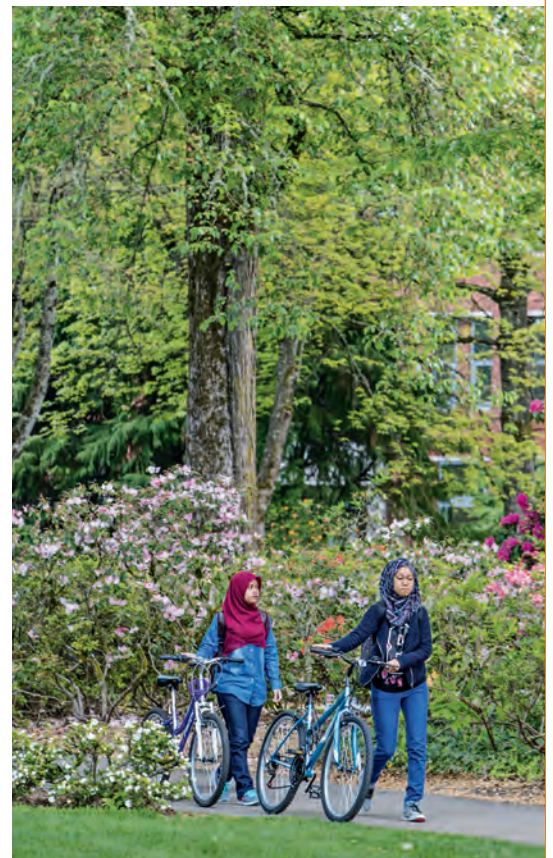


Doris G. Butler
Marybel F. Butler '41
Dorothy M. & Robert E. Butler
Shirley & John V. Byrne
Jo Ann Day Cady '48 & Glenn Williamson
Rebecca M. & Steven M. Camden '77
Cynthia Douglass Campbell '77
& Duncan Campbell
Sylvia & Rick D. Cardwell '67
Shirley I. Carlson
Junelle M. & Bud Carroll '43
Gail Marine Case '61 & William C. Case '62
Philip A. Cash
Susan & Scott O. Cassidy '82
Betty & Emery N. Castle '06 (Hon. Doc.)
Pamela J. Castle '90 & Gregory S. Paulson
Candi J. & William A. Cecil '75
Maulien & Payson P. Cha '68
Richard W. Chambers '62
Karla Von Borstel Chambers '81
& William D. Chambers '81
Joan & Michael P. Chamness '71
William Chang '81
Meredith Y. & Bob Chapman '65

Jane & William A. Cheney
 Ralph B. Chilton
 Jane C. & Chun Chiu '70
 Orr-Lyda Brown Chowning '43
 & Eldon W. Chowning
 Mary C. Haven & Gerald R. Christensen '57
 Mark A. Christensen '82
 Tracey Boydston Clark '73 & Mike Clark '72
 Marie Cleasby '52
 Gordon Clemons '65
 Sally A. & James H. Colburn '55
 Kathryn C. & Douglas M. Collins
 Vicki Leiningner Comer '68
 & William F. Comer '68
 Sharon & Jay C. Compton '79
 Betty K. '52 & John C. Compton '53
 Sharon Thomas Conrads '73
 & Randal G. Conrads '72
 Sherrie Smith Cooper '71
 & Arthur D. Cooper '70
 Denise F. & Michael C. Cooper '73
 Ingrid I. & Douglas W. Corcoran '79
 Mary Mollison Coucher '84
 Leslie & Jay Culbertson '72
 Sharon A. & Brent Dalrymple
 David Daniels
 Lynne DeTar Davies '69 & Tad Davies '78
 Rose Marie Davis
 Tammy & Paul R. Davis
 Marla & J. C. de Broekert '52
 Mary Lee Robertson DeAutremont '70
 & Steve C. DeAutremont '70
 Beatrice & Gordon C. Decker '45
 Beth A. & Will Delgado
 Cheryl D. Rogers & Bob Delozier
 Kaaren Johanson Demorest '64
 & Harry L. Demorest '63
 John W. DeMuth
 Paul Denison '71
 Margie Clem Denner
 Johanna Wilson DeStefano
 Diane S. Detering-Paddison '81
 & Christopher S. Paddison
 Lynne Hallstrom Detrick '68
 & George F. Detrick
 Virginia S. Dillon
 James H. Diven '50
 Susan Swenson Dolan '63
 & Martin W. Dolan '53
 Margaret Double '40
 Janette G. Drew
 Marilyn R. & John A. Duke
 Marilyn Barry Duncan '64
 & Douglas J. Duncan '78

Bette Pierce Durbin '40
 & Fred W. Durbin Jr. '41
 Alice & Paul B. Duruz '42
 Tyanne & Chris Dussin
 Richard L. Earnheart '27
 Aurelia P. Edwards
 Jessie G. & Delbert R. Ellis '55
 Kelsey M. Hawkins '06 & Jacoby Ellsbury '07
 Bonnie Serkin & William H. Emery II
 Ann H. & Ronald E. Emerson '66
 Richard C. Erath
 Sandra Farrell Ericksen '58
 & Wayne R. Ericksen '58
 John W. Erickson '70
 Gretchen Heesacker Evans '69
 & Richard B. Evans '69
 Sheng C. Fang '44
 Mary F. & George G. Fax
 Gary Ferguson
 Robert G. Ferguson
 Carol L. & Charles E. Finley
 Mary M. & Donald W. Fisher '53
 Ruth Cereghino Fisher '54
 Sue Roderick Fisher '63 & Mike Fisher
 Gayle E. Fitzpatrick '78
 Betty Hutchinson Flad '67
 & James W. Flad '68
 Carole & Michael D. Flanigan '69
 Michael J. Flanigan '96
 Lucy H. Fletcher
 Carolyn Burdick Forbes
 & Donald L. Forbes '58
 Marcy & Wes Forman
 Lucinda Day Fournier
 & John L. Fournier III '97
 Judith Walls Freeman '63 & Peter K. Freeman
 Jane Burdell Freres '71 & Robert T. Freres Jr.
 Robert T. Freres, Sr.
 Diane Nurmi Freres '73 & Ted Freres '73
 Peggy & Gerald T. Fujii '79
 Millroy C. Fulton
 Barbara Steinfeld Furer '65
 & Robert W. Furer '65
 Michael J. Gamroth '73
 Henry Garnjobst Jr. '42
 Alice McNulty Gascho '88
 & Scott M. Gascho '90
 Ruth E. Gates
 Shirley Urban Gaussoin '56
 & Roy N. Gaussoin '56
 Frances Brown Gentry '53
 & John R. Gentry '51
 Emma Barker Gilleland '79
 & John Gilleland '78

Patricia A. & R. Stevens Gilley '56
 Suzanne & Bert Girod '61
 Carol Girt '62
 Dan Giustina
 Sara Herrle Godwin '95
 & Gabriel M. Godwin '94
 Chris M. & Steven J. Gomo '74
 Valentina N. Gontscharow
 Sheila & J. Michael Goodwin
 Frances E. '28 & Verne D. Gooley '29
 Eline Willis Goss
 Donna Bartels Gould '65 & David G. Gould '66
 Richard H. Grader '77
 Marilyn Burriss Graham '52
 & Dan A. Graham '51
 Susan & Kim L. Graham



Marylou McKay Green '49
 & Lester D. Green '50
 William L. Grewcock
 Betty '30 & George P. Griffis '30
 Joan E. Griffis
 Ken J. Griggs '84
 Mary Beth Griggs '85
 Tina Floberg Grim '68 & Douglas R. Grim
 Patricia S. Sharp & Scott G. Groben '80
 Theresa M. Kirsch '85 & Robert J. Grover '83

Milo Haas '83
Marguerite Whitaker Hagen '77
& Ronald S. Hagen '77
Arthur E. Hahn
Jim Hall
Bette J. & Alexander M. Hamilton Jr. '56
Katie W. & Clifford R. Hamilton '67
Astrid F. Hancock
Molly K. '95 & Mike Hanlon '94
Ruth Plummer Hansen '41
& N. John Hansen '41
Patricia Spayde Hansen '71
& T. Dean Hansen '69
Carol Hanshew-Julian
Steve Harder
Alison Lewis-Harlow & Brad R. Harlow '79
Judy Hamilton Harms '48 & Vernon P. Harms
Pat Harris
Pauline W. Harris
Raymond C. Harris '57
Tanna R. & Derek L. Harrison '91
Elaine Allen Harrison '64
& L. Wade Harrison '65
Suzanne & Philip R. Hatch '63
Sandra L. & Delbert J. Hayes
Harriett S. & Edmund Hayes Jr.
Kathleen F. & Edward H. Heath
Mary K. Hecht '50 & Charles Hecht
Lise & Kenneth W. Hedberg '43
Don O. Henderson
Gail H. & Ralph W. Hendrickson '61
Kristine G. & Timothy E. Hennessy '77
Gabrielle & G. Adolf Hertrich
Julia E. Hewson
Billie J. & Jim L. Hickman '64
Diane Dooley Hildebrandt
& Scott Hildebrandt '78
Carol Clarke Hinck '60
& Howard H. Hinck '57
Ellen Olson Hitsman '49
Janet & J. Scott Hockema
Janice Kelleher Hoffman '81
& Eric H. Hoffman '79
John G. Hogg '22
Margaret Hogg
Ronald V. Hogg '23
Janet Jones Holland '57
& Ralph W. Holland, Sr. '57
David B. Holtzman
Brenda M. Hood
Walter T. Horikawa
Nancy Johnson Horn '63
& Darrell C. Horn '61

Clara A. & Frederick H. Horne
Diane & John Howieson '06
E. Roxie Howlett '45 & John W. Howlett
Rai-Yun L. '83 & William W. Hsu '82
Bernice P. Huber
Evelyn M. Huber
Beth & Jerry Hulsman '54
Carol J. & Michael Huntington '64
Lorraine Fries Husband '63
& James H. Husband '63
Marilyn I. & Robert H. Hutchins, Sr. '63
Jill Roake Inskeep '72 & John J. Inskeep
Terri Raines Irwin
William M. Jabs '69
Gillici F. Jackson
Steven R. Jackson '05
Janice T. & Jerry Jacoby '62
Sandra L. & Arthur M. James
Kathleen Wolff Jansen '82
& Richard J. Jansen '82
Joan Baird Jarboe & John A. Jarboe '55
Pauline Robinson Jaworski '50
& Ernest G. Jaworski '52
Mary & Ed Jennings
Caron C. & Barry D. Johnson '75
Ellen Gilfillan Johnson '54
& Frank Dean Johnson '78
James B. Johnson
Dorothy Clunes Johnson '65
& Kenneth R. Johnson '15 (Hon.)
Nancy D. Johnson
Valerie Johnson
Alberta B. Johnston
Hilda Meius Jones '39 & Robert D. Jones '38
Karen Bailey Jones '80
& Kenneth C. Jones '80
Julie & Frank Jungers
Arthur Kahn
Ike S. Kampmann
Laurel B. Yocom & Richard S. Kebler
Willard B. Keen
Rosalind C. & Michael L. Keiser
Helen Hulsman Kelly '51 & Walter Kelly '51
Steve Kenney
Faye & C. Francis Kenyon '65
Agnes Kern
Josephine A. Kern
Janis & Daniel P. Kerrigan '79
Marian M. Kiger
Kay & Robert R. King '67
Aline Kischel
Ilene K. Kleinsorge & Tom Walmsley

Leona J. Klippel
Sue Wiesner Koffel '66 & Martin M. Koffel
Rose Allen Kraft '40
Katherine R. & Mark J. Kralj '77
Paula & Ken Krane
Jean & John G. Krautscheid '55
Florence Ferrey Kubin '53
& Gerald R. Kubin '38
Marilyn K. & Russell V. Kuhns '68
Shirley R. & Jim Kuse '55
Waffeya E. & Charles W. Lacey '51
Christine L. & Brian T. Laine '75
Jacqueline Fowler Lampros
& Marcus C. Lampros '81
Jeanne C. & Ken Landrum '77
Bill Lanfri
Webster T. Langeliers '95
Susan Johnson Larsen '63
& Allan H. Larsen '63
Amelia R. Lawless
Way W. Lee '49



Allen Leggett '60
Dorette & Berlan Lemon '41
Hugo L. Libby '37
Sidney Licht
Irene E. & Richard D. Lilja '60
Andrew C. Lim '68
Whitney M. & Roger W. Lindquist '55
Susan L. Lindsay

Ruth Adhoch Lipscomb '83
& Terry M. Lipscomb
Lynn & Jack Loacker
Barbara Hayden Loomis '57
& Robert C. Loomis '56
Deborah Kennedy & Paul G. Lorenzini '70
Kaye Bailey Loughmiller '64
& Bert E. Loughmiller '64
Ronald P. Lovell
Shelley Bailey & Gary D. Lundgren '77
Christina & Toby A. Luther '96
Dollie & Edward C. Lynch
Trese & Steven J. Lytle
Maybelle Clark Macdonald '39
Karlene & Kory MacGregor '91



Martha Dreyer MacGregor '32
& Cecil M. MacGregor '32
Zella Mack
Howard M. Mann
Phyllis Brown Markee '50
Paul R. Marriott
Georgia Leupold Marshall
& David B. Marshall '50
Joyce B. O'Neill & Larry W. Martin '59
Robert Martin '71
Elizabeth M. Mason
Victoria J. Mastrobuono
Linda L. & Donald C. Mather '67
Colene & Adolphe J. Mathes Jr. '48
Catherine Z. & Christopher K. Mathews

Hiliary Hart-Mattecheck
& Bill Mattecheck '77
Marion C. Matteson
LaMont Matthews '56
Janet Hatch May '66 & Ronald A. May '65
Laura L. & Robert M. Mayes '69
Debbie & Richard E. McAlister '80
June Geil McCallister '40
Elise F. McClure '81
Marie G. & Ralph M. McCugh '42
Edna L. McDowell
Sharon L. & Robert F. McElroy
Vivian & James W. McEwen '35
Thomas G. McGillivray
Suzanne Phelps McGrath '70
& Bernard K. McGrath '70
Pat & Keith R. McKennon '55
Virginia & Norman V. McKibben '59
Thelma & Charles E. McMurdo '37
Jay L. McQuillen Jr. '86
Vicki McQuillen
Robert H. Mealey '36
Margaret E. & Thomas R. Meehan
Rebecca Schild Meier '67
James D. Mendenhall '79
Patrick M. Mendenhall '81
Ina Justice Merchant '57
& Stephen T. Merchant '56
Kay J. & Charles W. Merrill '63
Joan Glover Michalek '61
& Joseph S. Michalek '60
Jean & Gail Miller
Penni & Bob Milum '60
Betty E. Miner
Susan Sanders Mobley '77
& Greg Mobley '73
Robert Model
Jennifer L. & Jerome B. Moiso
Alfred W. Moltke
David A. Montagne '87
Arvida D. Moore
Virginia E. Moore '42
G. Greg Morgan
Barbara L. Fontaine '88
& Don B. Morrison '89
Lola J. & Jerry Morrison '73
Laura & Forrest W. Morse
Linda L. & Frank Morse '70
Linn & Jonathan B. Morse '70
Jean Warrens Morse '45
& William B. Morse '40
Mary L. & Douglas J. Morton '65
Helena M. & Bernie Muehlenkamp

James C. Mullenix '63
Irene H. & Gary L. Musser
Carol J. Magness '92
& Thomas T. Nakano '89
Ann Williams Navarrette '76
& Vance V. Navarrette '76
Carol King Nelson '61 & Earl E. Nelson '57
Jennylee Sandberg Nesbitt '59
& Gregory Nesbitt '58
Jane Webster Newton '71
& Michael Newton '59
Irva Kay Neyhart
Kathleen Hickman Nicholson '80
& Bill Nicholson '80
Molly O'Connor Niebergall '54
& Tom Niebergall '54
Lucille H. & Robert G. Nielsen '42
Leslie R. & Timothy J. Nielsen '79
Eva B. Noble '41 & Marvin Boone Noble '38
Joanne Ganony Norton '35
& Charles E. Norton '34
Leone Rockhold Nutter '35
& Ben E. Nutter '36
Ronald G. Nutting '52
Michael O'Brien
Nelson M. Olf '57
Jan & Steven J. Oliva '63
Tracy Schubert Oliver & Brian A. Oliver '87
Bonnie S. Onsdorff '29
Kathy & Peter Oosterhof '87
Maxine '43 & Bud A. Ossey '43
Eleanor '33 & Gene C. Otwell
L. E. Ousterhout '43
Sue T. & Peter E. Overton '56
Jennifer Boomer Pace '85
& Robert J. Pace '84
Vicki R. & Bill Pahl '71
Elmer T. Palm '51
Cherri M. Pancake
Shirley Nyman Papé '86
Charles T. Parker '08
Debra Hopp Parkin & James D. Parkin '86
Ruth E. & Albert C. Parr '64
Loni Austin Parrish '81 & Scott N. Parrish '81
Deborah & Lowell E. Patton '50
Joe B. Pauletto Jr. '72
Pamela J. Castle '90 & Gregory S. Paulson
Janet Aydelott Pease '60
& Norman C. Pease
Barbara Burtis Peck '32 & Norton L. Peck '31
Sofya-Sonia Penic
Karla Pepe
Tod D. Perkins '86

Janet A. & Charles G. Peter '53
Sarah & Jeff Petersen '88
Betty Shoemaker Peterson '79
Madeleine C. Deininger
& Joel E. Peterson '69
Norman W. Pettijohn
Terri L. & R. Mike Phelps '76
Carmen Ford Phillips '59
James H. Phillips '60
Mary E. Phillips '73
Nancy M. & Paul V. Phillips
Steve Piazza
Carol Hill Pickard '76 & Richard R. Pickard
Theresa M. & James J. Piro '74
Raeda Reece Poirot '53
& James W. Poirot '53
Dean W. Pollman '71
Susan Hufford Poole '69
& Robert R. Poole '67
Keely S. & John D. Porter '83
Marthel D. '54 & George A. Porter '53
Cynthia Boldman Potwin '75
& Peter V. Potwin '72
Yvonne & Dennis D. Powell '70
Karen & Steve Preece '69
Janet Rufener Presley '54 & Roy Presley '55
Stephanie G. & George Puentes
Gwendolyn A. & Michael D. Purdy '76
Helen Suter Purkerson '63
& Darrel R. Purkerson '63
Elaine Roberts Ramsdell '42
& Vittz-James Ramsdell '42
Suzan J. & David W. Ramus '77
Beth & Edward J. Ray
Lori A. & Roderick J. Ray Jr. '79
Nancy Walker Reece '78 & David J. Reece '77
Carrie Schroeder Reese '90
& Chad Reese '90
Leona M. & Harold E. Rice
Grace E. '83 & Mike Rich '07 (Hon. Doc.)
Phyllis & James E. Richards
Edward N. Rickert Jr. '38
Sandra & Roy L. Rider '60
Dee & Mike Riley
June Morse Ringe '40 & Truxton Ringe '40
Joan & Roger G. Ritchey '63
Jane Johnson Roath '64
& Stephen D. Roath '63
Sylvia Robb
Jennifer B. & Donald A. Robert '82
Kay Conrad Robinson & Alan H. Robinson
Linda R. Ashkenas & Jeffrey D. Rodgers '86
Ruth E. & Roy L. Rogers '56

Judy & Howard Ropp
Julie Miles Rosling '69 & Reed V. Rosling '71
Jean Starker Roth '42
Orville N. Roth
Joel L. Rothstein
John D. Rowell '48
Theresa A. & Carl R. Runyon '76
Jaclyn Jacobs Rusch '51
Della M. Russell
Margaret M. Ryan
Grace Sandberg
Carla M. & Robert T. Sanders '76
Amy Svikhart Sanders '93
& Scott W. Sanders '90
Gerry & Howard I. Sargent '33
Arthur H. Sasser '41
Priscilla Prince Saunders '60
Frances A. Saxton '40
Frederica Schad
Shirley Williamson Schamp '56
& Dean Schamp '51
Adolph H. Scharff
Lila L. Schmidt '48
Viola H. Schmidt
Ronald A. Schoenheit '65
Kelly K. Douglas & Eric H. Schoenstein '88
Patricia & Darrell H. Schroeder '48
Gretchen S. Schuette '80 & Rick Romano
Jane E. Schulz '40
Karen L. & James S. Schupp '78
Edna J. & Byron C. Scott '40
Julie Davies Searcy '63 & James T. Searcy '59
Brenda B. Senturia
Nancy B. & Gregory R. Serrurier '79
Ken Sexton
Rajen J. Shah '85
Angela Sumner Shearer '79
& Jeffrey W. Shearer '77
Susan B. & Joseph S. Shearer Jr.
Alice & William R. Sibley
Lisa K. & Lee J. Sickler '90
B. J. Simmons '49 & Forrest W. Simmons '51
Joan & Tom Skoro '81
Gene D. Slayter
Janet & Richard C. Small '67
Ann Smith
Marie E. & Charles T. Smith '59
Katherine Smith '61
Diane L. & Larry Smith
Laurie Lewis Smith '78 & Lloyd E. Smith '78
Evelyn S. Kamback & Milton R. Smith '69

Julie Bredemeier Smith & Rex C. Smith '73
Lieselotte Leonard Smith
& Richard N. Smith '57
Kristel Rydman Smith '70
& Robert V. Smith '69
Debra J. Somers-Closs '76
Eleanor J. Sonin '40
Patricia & B. Linn Soule
Judy A. & Scott D. South '83
Courtney P. & John B. Souther Jr. '81
Katherine K. Spencer '64
Mark R. Sponenburgh
Mary L. & Lawrence W. Stadler '60
Henry M. Stalick
Zennie M. Stauffer '29
John H. Stegemann '60
John Stewart



Loran L. Stewart '32
Joan E. Stoddard '65
Lee R. Stolle
Cathy A. & Bill Stoller
Elizabeth J. Stubbs
Joyce Reusser Stuntzner '64
& Ronald E. Stuntzner '64
Robert E. Stutz '43
Joan Countryman Suit '53 & Herman D. Suit
Pat & James E. Summerton

Josephine Sunderland '32
 Carlene K. Suzuki
 Frederick J. Swanson
 Judy Loosley Sweeney '78
 & Dennis J. Sweeney
 Jackie Swint '51
 Joanne Deffenbaugh Talbert '58
 & Larry K. Talbert
 Abhi Y. Talwalkar '86
 Linda Watanabe Talwalkar '87
 William H. Taubeneck '49
 Amy C. Tykeson & John D. Teller '78
 Roswell A. Ten Eyck '50
 Susan Brown Terrell '77 & Patrick Terrell '77
 Ann E. & Dave Thompson
 Carrie S. & Eric C. Thompson '86
 Ingles M. Thompson
 Stephen E. Thompson Jr.
 Marta J. & Kenneth Thrasher '71
 Jana & Doug Tindall '78
 William H. Tomscheck '35
 Kathleen M. & Les Toth
 Lorraine T. Towey
 William R. Town
 Sally J. Tripp
 Minnie Moore Trommershausen '38
 & Alfred J. Trommershausen '40
 Jo Anne J. & Clifford W. Trow
 Gayl L. & Edwin A. Troyer Jr. '76
 Marion T. Tsefalas
 Roberta Tumbiolo
 Willie & Donald E. Tykeson
 Deanna R. & Larry Unger '78
 Sheila Griep Van Zandt '59
 & Edward F. Van Zandt '59
 Grace V. VanDeventer
 Marianne Tasker & Thomas A. Verhoeven '76
 Frank J. Vettori '49
 Muriel C. Vincent '44
 Susanne & Don H. Wake '59
 Barbara F. & Wendell O. Walker
 Gloria J. Shaw-Walker & John Walker III '55
 Dolores Lorraine Walling
 & Walter C. Walling '41
 Louise Wang
 Jim Weathers '67
 Tonetta A. & Mark B. Weaver '92
 Thomas R. Webb '68
 Janet Gray Webster '95
 & Stephen A. Webster
 Jodi & John Weisner '95
 J. Gidget Boylan Welborn '85
 & Darren M. Welborn '84
 Ann Ridings Wellman '55
 & Norbert J. Wellman '54
 Sharon Hastings Welty '75
 & James R. Welty '54
 Linda K. & Jan P. Wepster '63
 Carmen & Thomas M. West '76
 George B. Whatley
 Carol A. Whipple '70
 Elaine Yunker Whiteley '53
 & Benjamin R. Whiteley '51
 Zel Brook '74 & Bradford S. Whiting '70
 R. Vincent Whiting
 Lisa M. Whyte
 Miriam D. & Charles E. Wicks '50
 Charles L. Wiedrich '56
 Bob Wienert
 Peggy Bedell Wiggett '72
 & Jim F. Wiggett '72
 Virginia Noel Wilborn '72 & Jack Wilborn '69
 Evelyn & Norman E. Wildish '42
 C. Victor Wiley
 Paul J. Willard
 Jennie L. Williams
 Phyllis Williams
 Janice Manly Williams '53
 & Wyman Williams Jr. '51
 Jo Ann Day Cady '48 & Glenn Williamson
 Alice A. Winans
 Donnalee & Neil P. Wissing '53
 Gayle L. & Richard E. Withnell
 Wendy L. & Ronald D. Wobig
 Peggy Colton Wood '61 & Joe Wood '60
 Cindy L. Woodley
 Todd W. Woodley '86
 Eleanor Purcell Woodson '48
 Susan Smith Wrenn '62 & Don A. Wrenn '62
 Maryann L. Wyss & George W. Wyss '40
 Raymond Wyss
 Jerry Yamamuro '76
 David Yates
 Judy B. & Richard T. Yerian '65
 Thea E. & Nicholas J. Yonker
 Flo Retta J. Young
 Rosemary M. '54 & John A. Young '53
 Ruth Jones Young '66 & J. Lowell Young
 Robert Zagunis '77
 Margaret J. Hartman '68
 & Robert G. Zahary '65
 Denise Weber Zahradnik '78
 & Steven L. Zahradnik '78
 Maeve & Steven A. Zamsky '90
 Claudia Roenicke Zerba '73
 & Dennis R. Zerba '71
 Josephine Schumann Zimmerman '47
 & Orin F. Zimmerman '47



CAMPAIGN DONORS: CORPORATIONS, FOUNDATIONS, AND OTHER ORGANIZATIONS \$1 MILLION AND ABOVE

Anonymous (2)	Infinity Pharmaceuticals	Oregon Forest Industries Council
Agouron Institute	Intel Corporation	PacificSource Health Plans
American Cancer Society, Inc.	INTO Oregon State University, Inc.	The David and Lucile Packard Foundation
American Chemical Society	JELD-WEN, Inc.	Plum Creek Timber Company, Inc.
ARCS Foundation Portland Chapter	W. M. Keck Foundation	Portland General Electric
Asahi Kasei Microdevices Corporation	Kelley Family Foundation	Reser's Fine Foods, Inc.
Austin Industries	Leica Geosystems, Inc.	Roseburg Forest Products Company
Boeing Company	Maybelle Clark Macdonald Fund	Sanders Family Foundation
BP Amoco PLC	Medical Research Foundation of Oregon	Semiconductor Research Corporation
Chambers Communications Corporation	Meyer Memorial Trust	Starker Forests, Inc.
Chevron Corporation	Gordon and Betty Moore Foundation	TDS Telecommunication Corporation
Cobalt Development Institute	M. J. Murdock Charitable Trust	Tektronix, Inc.
The Ford Family Foundation	National Council for Air and Stream Improvement	Texas Instruments Incorporated
Freres Lumber Company, Inc.	National Fish and Wildlife Foundation	Triad Machinery, Inc.
Gambrinus Company	National Semiconductor Corporation	Tykeson Family Charitable Trust
Bill & Melinda Gates Foundation	NJG Investments	USANA, Inc.
Google	Noyce Foundation	Wayne and Gladys Valley Foundation
Hanson Scholarship Trust	NuScale Power, LLC	The G. Unger Vetlesen Foundation
Hewlett-Packard Company	Oregon Community Foundation	Vinoculate, Inc.
Howard Hughes Medical Institute		Weyerhaeuser Company

CAMPAIGN DONORS: CORPORATIONS, FOUNDATIONS, AND OTHER ORGANIZATIONS \$100,000-\$999,999

3M	Analog Devices	Boone and Crockett Club
Academy for Educational Development	Andersen Construction Company, Inc.	BOS Foundation
A-dec, Inc.	AOBiome LLC	Robert Bosch LLC
Adidas America, Inc.	ArborGen LLC	Broadcom, Inc.
Aequitas Capital Management	Arclin USA LLC	Bullitt Foundation
Aggregate Resource Industries, Inc.	Associated General Contractors Oregon-Columbia Chapter	Burlingham Trust, Inc.
Agile Sports Technologies, Inc.	Associated Oregon Loggers, Inc.	California Chapter Wild Sheep Foundation
Agilent Technologies, Inc.	Myrtle L. Atkinson Foundation	Campbell Global
Agri Beef Co.	ATS Systems Oregon, Inc.	Capsugel, Inc.
Allegheny Technologies, Inc.	AU Optronics Corporation	Carestream
Almond Board of California	Autzen Foundation	Carruth Trust
Alpaca Research Foundation	Cameron Baird Foundation	Cascade Timber Consulting, Inc.
Altera Corporation	Banfield Pet Hospital	Catalyst Foundation
American Forest Foundation, Inc.	Battelle Memorial Institute	CBT Nuggets, LLC
American Heart Association	Bayer Group	Central Lincoln People's Utility District
American Judicature Society	Beavers Charitable Trust	Central Oregon Seeds, Inc.
American Seed Research Foundation	Benchmade Knife Company, Inc.	Cesign, Inc.
American Society of Pharmacognosy	Bi-Mart Corporation	CetaTech, Inc.
American Transmission Company	Blount International, Inc.	CH2M HILL Companies Ltd
American Vineyard Foundation	Bob's Red Mill Natural Foods, Inc.	Chemical Specialties, Inc.
American Wind Wildlife Institute		CHS, Inc.

Chugai Pharmaceuticals Company
Citizens Bank
Clark Foundation
Clif Bar Family Foundation
Coastal Farm & Ranch
CoBank
Coca-Cola Company
Shelby & Ruth Cole Lead Trust
Collins Medical Trust
Columbia Distributing
Columbia Forest Products, Inc.
Columbia Power Technologies
Comer Family Foundation
J. C. Compton Company
ConocoPhillips
Contract Administration Fund
Coral Construction Company
Corning Incorporated
Cotton, Inc.
CTK Capital Corporation
Cubist Pharmaceuticals
Daimler AG
Dairy Management, Inc.
Deb's Mixers
Del Monte Foods Company
Delta Plant Technologies, Inc.
The Camille and Henry Dreyfus Foundation
Ducks Unlimited Incorporated
DuPont Company
Eagleflight Capital LLC
Early Morning, LLC

Ecoworks Foundation, Inc.
Electro Scientific Industries
Ellison Medical Foundation
Emerald Forest Products
Enumclaw Insurance Group
Eola Hills Wine Cellars
ESCO Corporation
European Aluminium Association
David Evans and Associates, Inc.
ExxonMobil Corporation
Facebook, Inc.
Farwest Steel Corporation
FEI Company
First Quantum Minerals Ltd
Jim Fisher Motors
Flora Family Foundation
Ford Motor Company
Forest Capital Partners LLC
Fortis Alberta, Inc.
James W. Fowler Company
Herman Frasch Foundation
Freeport-McMoRan Copper & Gold, Inc.
Freshwater Trust
Fuller Foundation
Richard & Janet Geary Foundation
Gelco Construction Company
Georgia-Pacific Corporation
The Getty Foundation
Girod Family Enterprises LLC
Giustina Land and Timber Company
N. B. Giustina Foundation

Granite Construction, Inc.
Great Lakes Fishery Commission
Great Lakes Fishery Trust
Greater Hart-Sheldon Conservation Fund
Green Diamond Resource Company
Green Market Systems, Inc.
Hamilton Construction Company
Hampton Resources, Inc.
Hancock Forest Management, Inc.
The Harris Foundation
Hemcon, Inc.
The William and Flora Hewlett Foundation
Ray Hickey Foundation
High Lonesome Ranch
Hill's Pet Nutrition, Inc.
Hoffman Construction Company
Benjamin Horning Trust
Ralph Hull Foundation
Hynix Semiconductor Manufacturing America, Inc.
Institute of Nuclear Power
IBM Corporation
International Association of Oil and Gas Producers
International Bank Reconstruction/Development
International Center for Agricultural Research in Dry Areas
International Whaling Commission
Island Press
IUCN
Jane Gray Jacobson Trust



Jefferson County Seed Growers Association
JFR Foundation
Robert Wood Johnson Foundation
Juvenile Diabetes Research Foundation
Kao Family Foundation
Kawasaki Microelectronics America, Inc.
Kennecott Greens Creek Mining Company
Kerneos Research Center
KeyCorp
Kiewit
Kingfisher Foundation
Koch Family Trust
KPMG International
The Kresge Foundation
Kroger Company
Lazar Foundation
Learfield Communications, Inc.
Lemelson Foundation
Leupold & Stevens, Inc.
LG Display Company
LGL Limited
Liberty Sports Holdings LLC
Lifewise
Lockheed Martin Corporation
Lone Rock Timber Company
Longview Fibre Company
LSI Corporation
Lunarr, Inc.
Maddie's Fund
March of Dimes
Marine Polymer Technologies, Inc.
Marquis Companies
May Trucking Company
Mazama Capital Management, Inc.
McFarland-Cascade
McGuire Bearing Company
MDU Resources Group, Inc.
Meduri Farms, Inc.
The Andrew W. Mellon Foundation
Menasha Corporation
Mentor Graphics Corporation
Merrill Family Foundation, Inc.
Micron Technology, Inc.
Microsoft Corporation
Mitsubishi UFJ Financial Group
Moda Health
Mondi South Africa
Monsanto Company
Moore Excavation, Inc.

Moss Adams LLP
Mt. Bachelor, Inc.
Munson Family Foundation
Murphy Company
Mushroom Biotechnology
National 4-H Council
National Academy for Nuclear Training
National Collegiate Inventors
& Innovators Alliance
National Council for Science
& the Environment
National Geographic Society
National Instruments
National Military Family Association
National Research Council
Native Plant Society of Oregon
Nature Conservancy
NEES Consortium, Inc.
Nestle USA, Inc.
Nicoli Foundation
Nike, Inc.
North River Jet Boats, Inc.
North West Camelid Foundation
Northwest Aluminum Company
Northwest Biosolids Management
Association
Northwest Earthmovers, Inc.
Northwest Energy Efficiency Alliance, Inc.
Northwest Farm Credit Services
Northwest Health Foundation
Novartis Corporation
NW Natural
The Ocean Foundation
R. D. Offutt Company
Olympic Resource Management
ON Semiconductor
Oregon Dairy Farmers Association
Oregon Forest Resources Institute
Oregon Freeze Dry, Inc.
Oregon State Credit Union
Oregon Turfgrass Foundation
Oregon Veterinary Medical Association
Oregon-Columbia Chapter NECA
Osmose Utilities, Inc.
Ousley Trust
Pacific Diabetes Technologies, Inc.
Pacific Gas & Electric Company
Pacific Life Foundation
Pacific Ocean Shelf Tracking Project
Pacific Power
PacWest Communications

RB Pamplin Corporation
Charles Pankow Foundation
Papé Group, Inc.
Parametrix
Perryman Company
The Pew Charitable Trusts
Picosun USA
Ponsse North America, Inc.
Port Blakely Companies
Portland BASF Chapter
Precision Castparts Corporation
PricewaterhouseCoopers LLP



Project Apis M.
Propane Education & Research Council
Puget Sound Energy
RadiSys Corporation
MH Randall Foundation
Rapid7 LLC
Rayonier Forest Resources
REACH Manganese Consortium
RealNetworks, Inc.
Resources for the Future
Rite Aid Corporation
Rosenkrans Scholarship Fund

Damon Runyon Cancer Research Foundation	Standard Process, Inc.	Walgreens Company
SAIC	Starview Foundation	Wal-Mart Corporation
Samaritan Health Services	State Farm Mutual Automobile Insurance Company	Weatherspoon Charitable Foundation
Samsung America, Inc.	Faye & Lucille Stewart Foundation	Wei Family Private Foundation, Inc.
Santiam Fish & Game Association	Stimson Lumber Company	Wells Fargo & Company
Sappi Forests	Sumitomo Chemical Company Ltd	West Coast Industrial Systems, Inc.
Sarepta Therapeutics, Inc.	Sunrise Trading, Inc.	West Hills Development Company
Schill & Seilacher Struktol	SweTree Technologies AB	Western Forestry & Conservation Association
SeaWeb	Symantec Corporation	Westinghouse Electric Company
Second Wind, Inc.	Syngenta International AG	Wheeler Foundation
Seneca Foods Corporation	Target Corporation	Helen Hay Whitney Foundation
Seneca Sawmill Company	TEC Equipment, Inc.	Wilburforce Foundation
Sharp Labs of America	John Templeton Foundation	Wildish Land Company
Shell Oil Company	TerraPower	Wildlife Warriors USA, Inc.
Shotpouch Foundation	Terway Investment Company	Willamette Valley Company
Silicon Laboratories, Inc.	Tides Foundation	Withnell Dodge
Simons Foundation	Tillamook County Creamery Association	The Wollenberg Foundation
Skanska USA Building, Inc.	Trimble Navigation Limited	World Class Technology Corporation
Slayden Construction Group, Inc.	Trust Management Services LLC	Xerox Corporation
Alfred P. Sloan Foundation	Tualatin Kennel Club	Xtreme Energetics, Inc.
SmithBucklin, Inc.	Tuktawa Foundation	Juan Young Trust
Smithsonian Institute	United Nations Environment Programme	
Society for Conservation Biology	United Nations FAO	
Society for Information Management	US Bancorp	
Spirit Mountain Community Fund	United States-Israel Binational Science Foundation	
SRI International		
SRVI Foundation		

Every attempt has been made to ensure the accuracy of these lists. However, if you notice an error, please contact Penny Hardesty, Director of Donor Relations, OSU Foundation, Penny.Hardesty@oregonstate.edu or 541-737-1469.

CAMPAIGN STEERING COMMITTEE

Patricia Valian Reser '60, Co-Chair
Chair, Reser's Fine Foods

James H. Rudd '06 (Hon.), Co-Chair
CEO and Principal, Ferguson Wellman Capital Management

Patrick F. Stone '74, Co-Chair
President and CEO, Williston Financial Group

Richard J. Campo '76
Founder, Chair, and CEO, Camden Property Trust

Kim Martin Casale '83
Retired Area Director, Bristol-Myers Squibb

Jon S. DeVaun '85
Retired Corporate Vice President, Microsoft

Lee Kearney '63
Retired Director and Division Manager, Peter Kiewit Sons'

Paul G. Lorenzini '70
Former CEO, NuScale Power
Retired President, Pacific Power & Light

Robert W. Lundeen '42
Retired Chair, Dow Chemical
Former Chair and CEO, Tektronix

Duane C. McDougall '74
Chair, Boise Cascade

Joyce N. Furman '64 (in memoriam)
Civic and community leader

Ex Officio
J. Michael Goodwin
President and CEO, OSU Foundation

Edward J. Ray
President, Oregon State University

Sabah Randhawa '81
Provost and Executive Vice President, Oregon State University



